

SCT Wireless

SCT-UM300 Wireless Broadband Modem

User Guide

Version 1.0



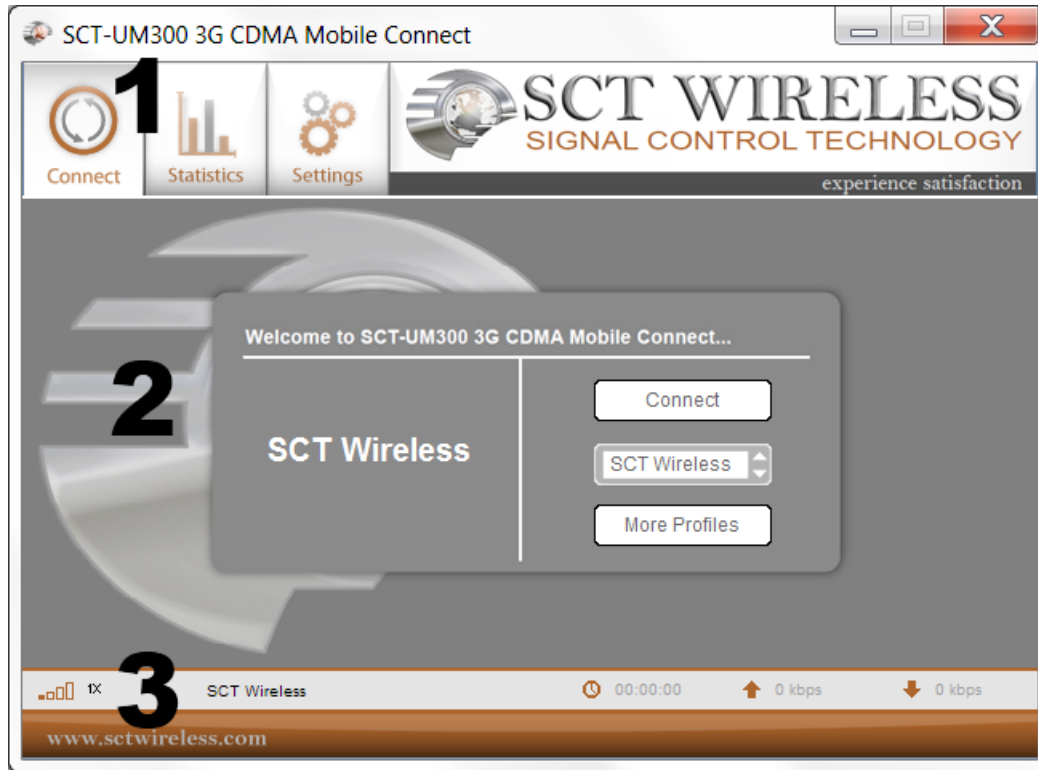
Introduction

Mobile Connect is a software program running on your PC. With Mobile Connect, the user can activate the device and establish a data link.

Windows

The Main Window	2
Data Link	3
Basics	3
Establishing a data link	3
Disconnect a data link	3
Profiles (Dialup Configuration)	3
Statistics	4
Settings.....	5
General	5
Network.....	5
Flow warning	6
Version.....	7
OTA	7
Device Activation	8
Live Update.....	9
Help.....	12
Mac Installation	13
Mac Home Screen.....	20
Data Link	20
Establishing a data link	20
Disconnect a data link.....	21
Device Activation	21
OTA	22
View OTA.....	22
Display	22
Device Activation	22
Network.....	22
Frequency Band	23
Safety Information	24





The Main Window



The main window of Mobile Connect consists of three areas:

1. Main Menu - Connect, Statistics, Setting. Make proper configuration to functions.
2. Client - display the details of each function.
3. Status - display the status of the Mobile Equipment.

Icons in the main window

ICON	DESCRIPTION
	Signal level
	Internet connection duration
	Transferring baud rate
	Receiving baud rate

Basics

You can establish a dialup data link over CDMA/EVDO via the device.

The dialup data link requires network coverage for CDMA or EVDO. In each of the links, the device will be connected to a specific phone number.

Establishing a data link

1. Select “Connect” tab
2. Select a profile from the profile list, or click “More Profiles” to set a profile as your default profile
3. Select “Connect” tab and click the “Connect” button to establish a data link.

Disconnect a data link

To disconnect, press the “Disconnect” button.

Profiles (Dialup Configuration)

Add

1. Select "Connect-->More Profiles".
2. Select "New", enter the profile name, choose a network in the popup window; setup the device in advanced settings; click "Finish" to save and close the window.

Note:

- a. Each profile depends on the setup settings of the carriers. Contact your service provider for these settings.
- b. If the settings for CSD, DNS, PPP and TCP/IP are needed, click on "Advanced Settings" to enter the proper settings for your carrier. After selecting, click "OK" to save the settings.

Set Default Profile

1. Select "Connect-->More Profiles"
2. Choose a profile in the list, and then click "Set as Default".

Modify

1. Select "Connect-->More Profiles";
2. Choose a profile in the list, and then click "View/Modify";
3. Make modifications;
4. Click "Finish" to save the settings.

Delete

1. Select "Connect-->More Profiles"
2. Choose a profile in the list, and then click "Delete"
3. In the confirmation box, click "OK" to proceed.

Restore

1. Select "Connect-->More Profiles"
2. Click "Restore" for initial settings.

Close

After editing the profiles, you can click "Close" to close the profile list windows.

Statistics

Data Flow

To view the data card's traffic statistics in real time or of current or last month, select "Statistics-->Current Statistic", " Statistics-->Usage This Month", " Statistics -->Usage Previous Month".

General

Auto Launch on Startup

If selected, Mobile Connect will run after Windows startup. Otherwise, Mobile Connect must be started manually (either by using the desktop icon or the "Start" menu).

1. In the main window, select "Settings-->General"
2. Select the checkbox "Auto Launch on Startup".

Auto Minimized

If selected, Mobile Connect will be minimized after Windows startup. You can check the current status on the system bar.

1. In the main window, select "Settings-->General"
2. Select the checkbox "Auto Minimized".

Link Auto Reactivation

If selected, Mobile Connect will try to reactive the internet disconnected link when the service recovers.

1. In the main window, select "Settings-->General"
2. Select the checkbox "Link Auto Reactivation".

The Idle Time Before Disconnect

You can define the idle time before the network connection is terminated, which will take effect on the next session.

Network

Depending on the coverage area, you may be covered by several networks at a same time. By default, the phone will choose the available network based on your account.

Frequency Band

By default, the phone will pick a Frequency Band automatically, unless your carrier has special instructions.

1. In the main window, select "Settings-->Network"
2. Select in "Frequency Band" dropdown list.

Details of each frequency band

Option	Note
Hybrid	Allows the phone to select the either EVDO or CDMA service based on the networks available in your current location.
CDMA 1x Only	Restricts the device to CDMA service.
EVDO Only	Restricts the device to EVDO service.

Select the Network

1. In the main window, select "Settings-->Network"
2. Select "Hybrid", "EVDO Only", or "CDMA1x Only".

Flow warning

In "Settings", "Flow Warning" contains settings for displaying contents, mode of flow statistics, and setting of threshold alerts.

Display

The display of statistics on flow can be set by data or by time:

1. In the main window, select "Settings-->Flow Warning"
2. Select the checkbox "Warn when a limit is approaching" to activate
3. To display by data, select "Data Limits (MB)" and enter the value of data range; or to display by time, select "Time Limits (Hours)" and enter the value of time range
4. In the dropdown list "Beginning day of month to calculate", choose the starting date of the statistics
5. Click on "Apply" to save.

To clear all the records of flow statistics, click "Delete History" and confirm to proceed.

Flow Warning

When the data flow or network connection time has reached the pre-set range, a notifying message will be displayed as an alert.

1. In the main window, select "Settings-->Flow Warning"
2. In the dropdown list "First warning point (%)", select one for the first-time notification

3. In the dropdown list "Second warning point (%)", select one for the second-time notification
4. Click on "Apply" to save.

Version

To view versions, select "Settings-->Version" in the main window.

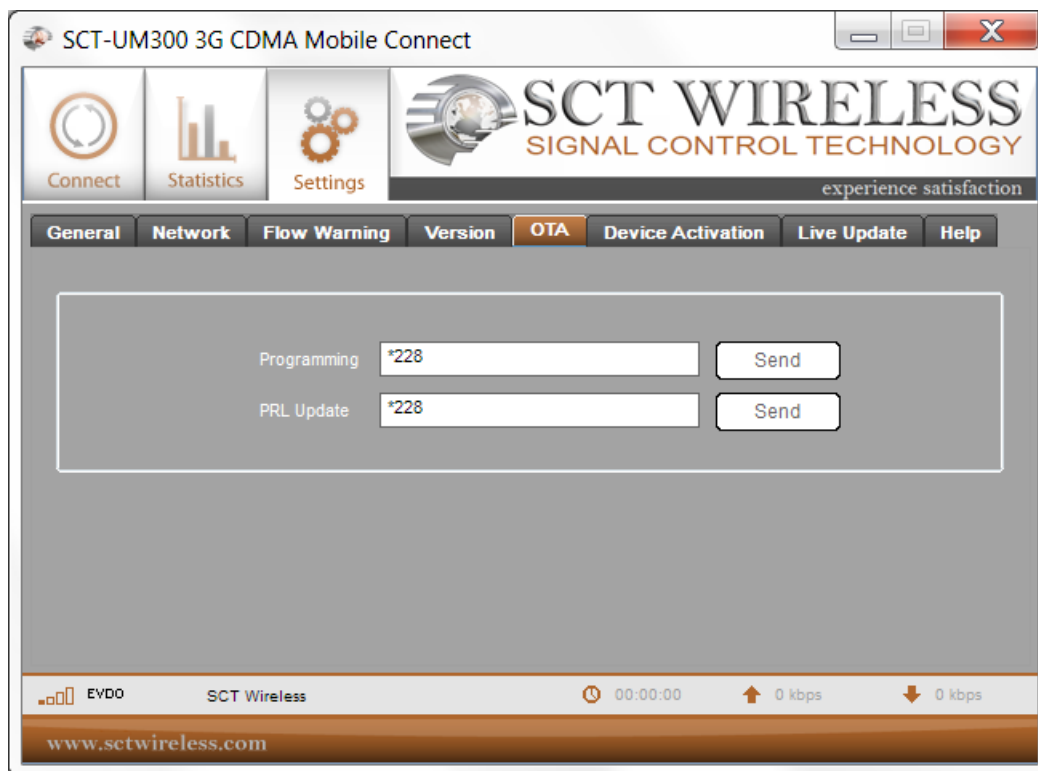
The version screen displays Software, Driver, Firmware, Firmware build, Hardware, and Boot Loader versions.

OTA

In "Settings", "OTA" page contains two OTA requests – Programming and PRL Update.

View OTA

1. Make sure the device is connected
2. In the main window, select "Settings-->OTA".
3. Select Programming to have your device programmed via OTA.
4. Select PRL Update to update the PRL in your device via OTA.
5. Click the "Send" button on the OTA option you require.



Device Activation

In "Settings", the "Device Activation" page contains device parameters and the device activation function.

The screenshot shows the "Device Activation" page of the SCT-UM300 3G CDMA Mobile Connect software. The page is titled "SCT WIRELESS SIGNAL CONTROL TECHNOLOGY" and "experience satisfaction". The "Device Activation" tab is selected in the navigation bar. The page contains the following fields and values:

Field	Value
Electronic Serial Number(ESN):	12807760170
MEID Hex:	a1000006a7666c
pESN Hex:	8076692a
Phone Number:	0000001234
IMSI(MIN):	0000004321
PRL:	2011
SID-NID:	SID NID

The status bar at the bottom shows "SCT Wireless" and "www.sctwireless.com".

Display

The following information is displayed:

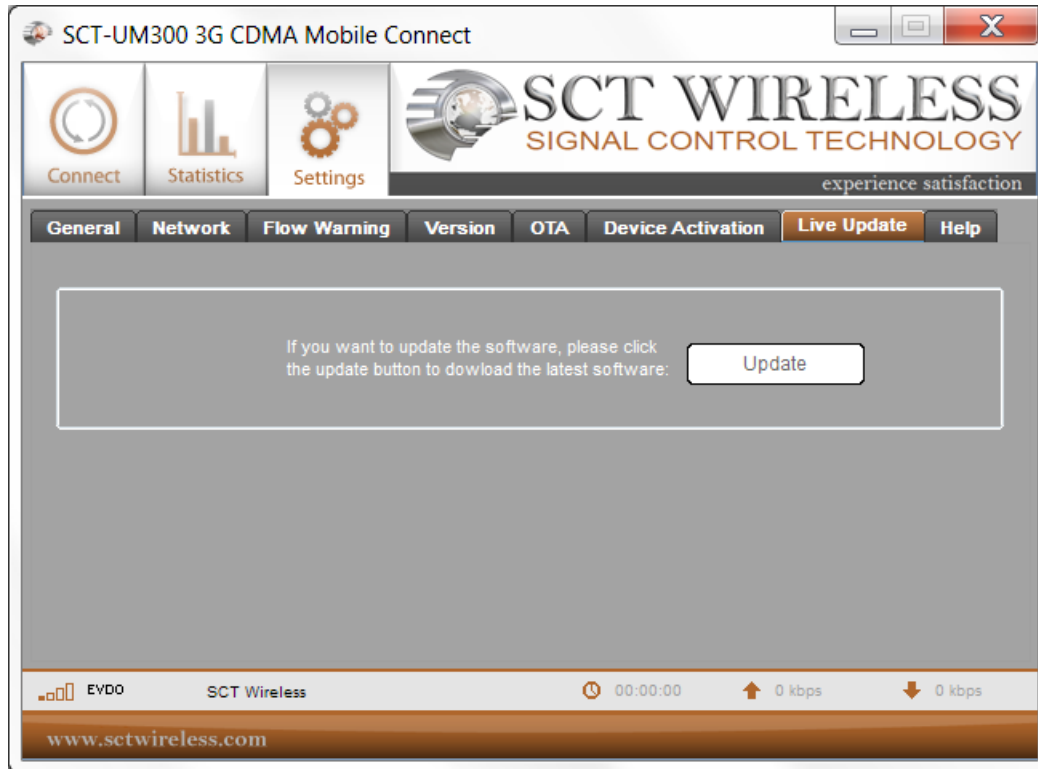
1. Electronic Serial Number (ESN): contains the ESN (Electronic Serial Number) of the device in decimal format
2. MEID Hex: contains the MEID (Mobile Equipment Identity) of the device in hex format
3. pESN Hex: contains the ESN (Electronic Serial Number) of the device in hex format.

Device Activation

1. In the main window, select "Settings-->Device Activation"
2. Input some or all parameters including MDN (Phone Number), MIN (IMSI), SID, NID and select a PRL file
3. Click on "OK" to activate the device.

Live Update

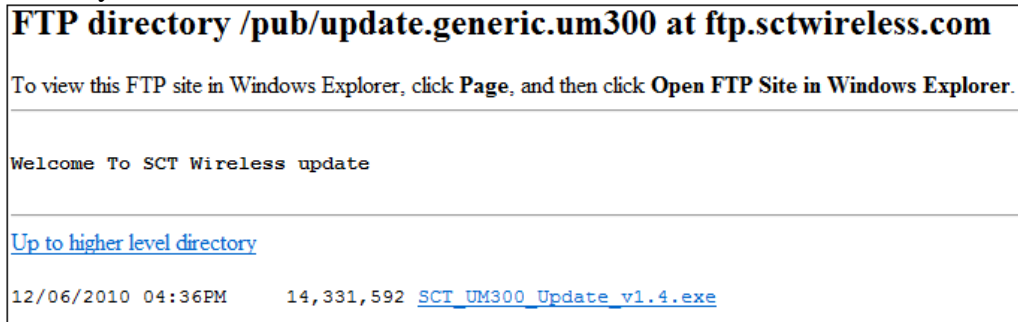
In "Settings", the "Live Update" page provides a link to download the latest software for update.



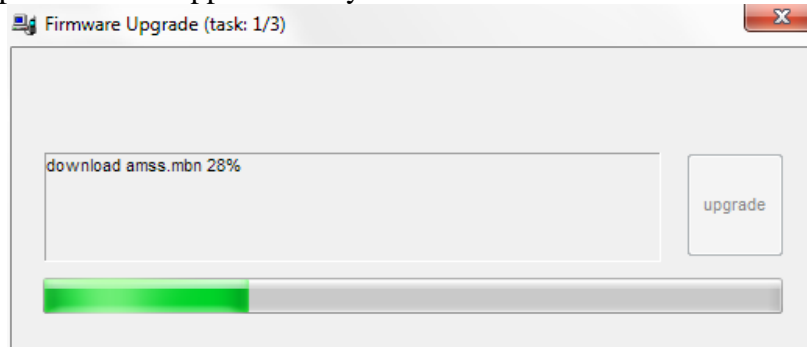
Live Update

1. Make sure the network is connected
2. Verify the version of your device by going to the "Settings" tab and selecting "Version". The version number is under Software.
3. Open the SCT-UM300 Mobile Connect. Go to the Settings tab and select Live Update. Press the Update button to launch your browser. **Once the browser has opened, close the SCT-UM300 Mobile Connect.**

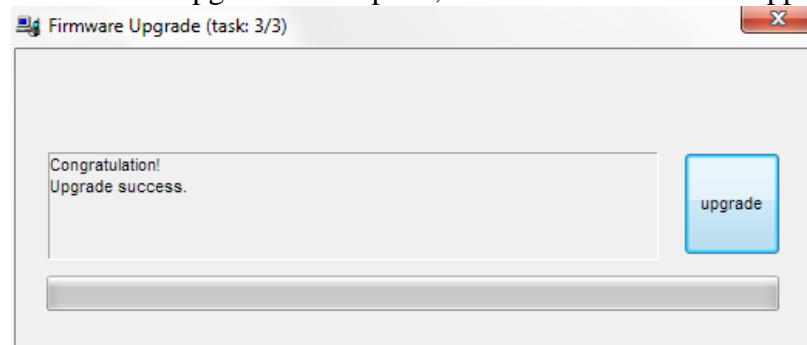
- The browser will automatically navigate to the Update site. Select the SCT.exe file. Compare the version from Step 1 to this version. If they are the same, no update is necessary.



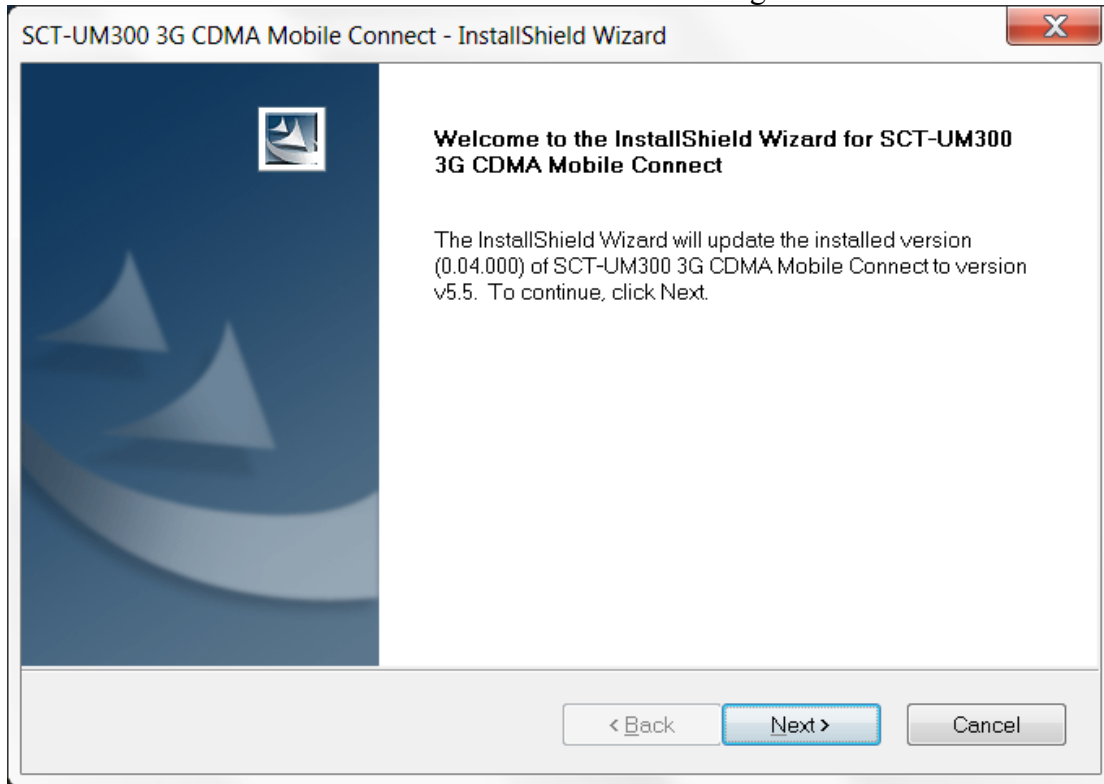
- When the .exe file is selected, a file download window will appear. Select “Run”. The update program will be downloaded. The progress will be displayed in a pop-up window.
- When the program has fully downloaded, an action pop-up window will appear. Select “Run” to continue the update.
- The Firmware Upgrade window will launch. After scanning, the window will display that the device has been found. To start the process, select Upgrade. The entire upgrade process takes approximately 5 minutes and 30 seconds.



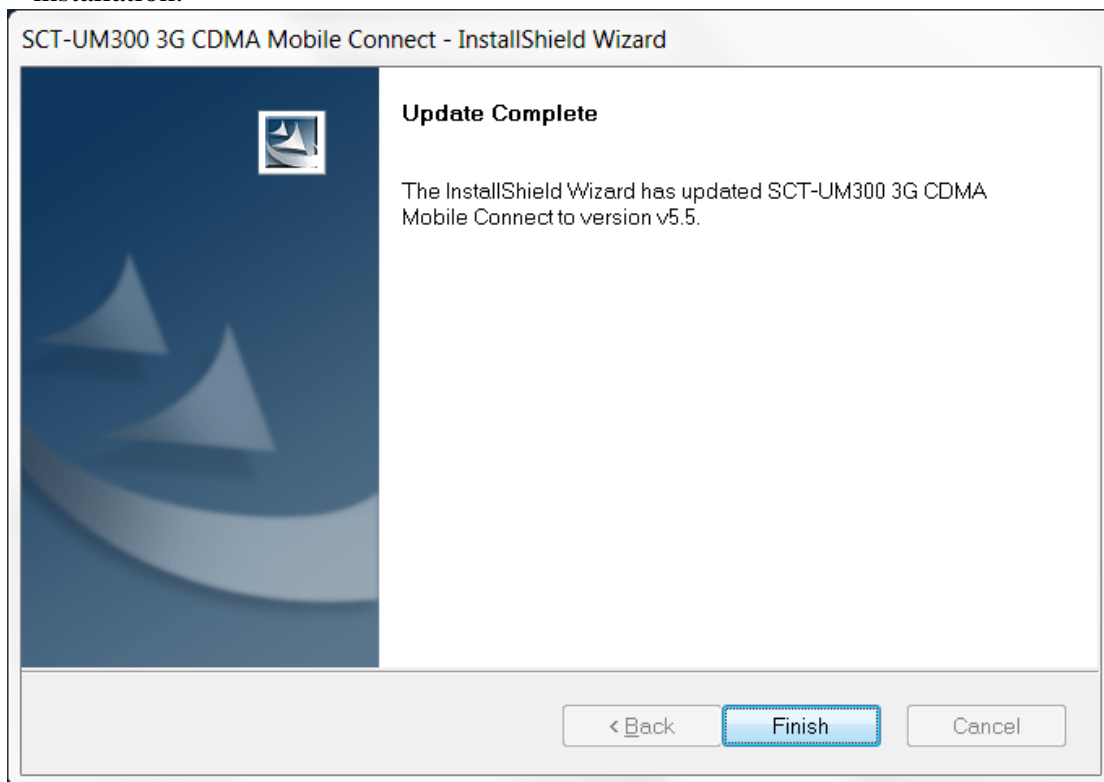
- A pop-up warning will appear reminding the user not to remove the device or to close the program. Doing either of these actions will damage the device. Select “Yes” to continue.
- The upgrade process will begin with Task 1 of 3 and will continue until Task 3 of 3 is complete. When the upgrade is complete, the window below will appear.



10. The installation of the new Mobile Connect will now begin. Select “Next” to continue.



11. A status bar will track the software installation. Select “Finish” to complete the installation.



Help

Through Help, you can learn the details of each menu in Mobile Connect for a quick understanding of functions of mobile. To read, select the "Help" view in the main window.

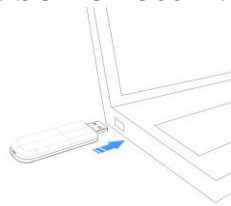


Mac Installation

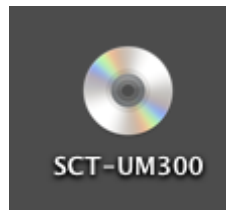
1. Remove the cover from the USB connector of the SCT-UM300.



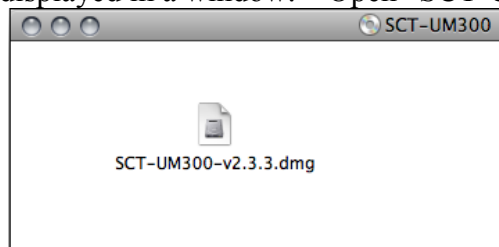
2. Insert the USB connector of the SCT-UM300 into a USB port on your computer.



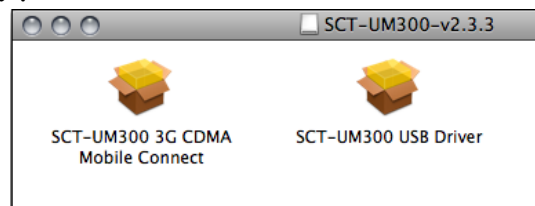
3. On the desktop, the icon for the SCT-UM300 will be displayed. Double click the icon to open the package.



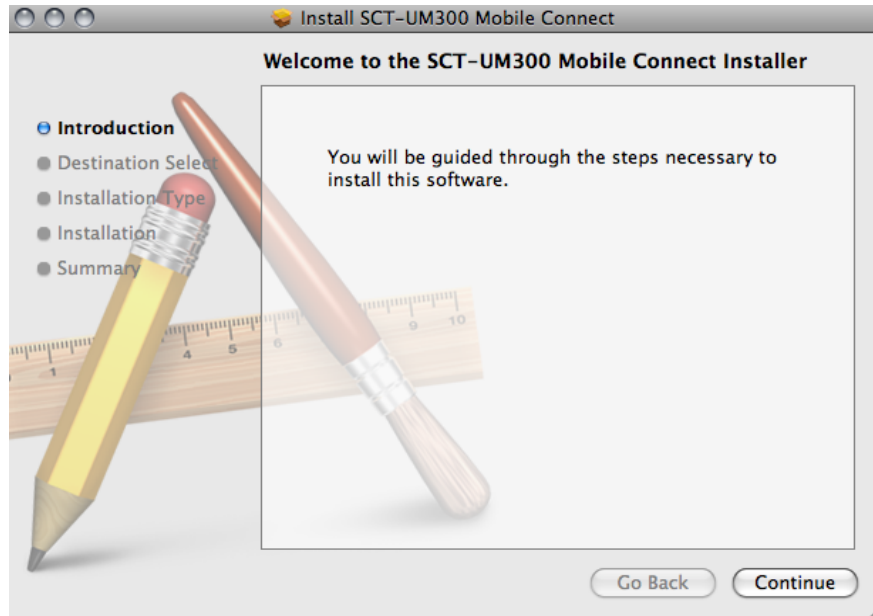
4. The contents will be displayed in a window. Open "SCT-UM300-v2.0.2.dmg".



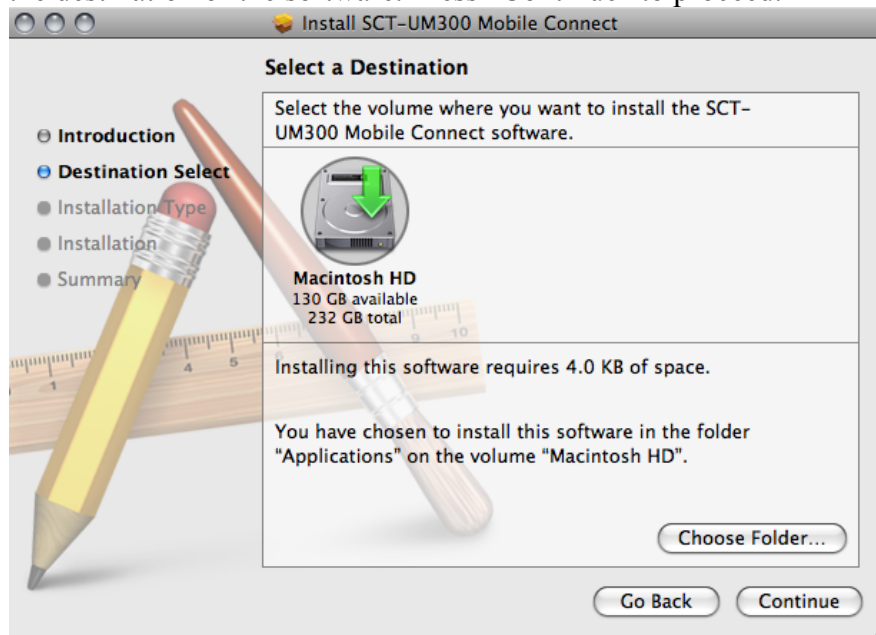
5. Three files will be available to select: the SCT-UM300 User Guide, the SCT-UM300 3G CDMA Mobile Connect, and the SCT-UM300 USB Driver. Select "SCT-UM300 3G Mobile Connect".



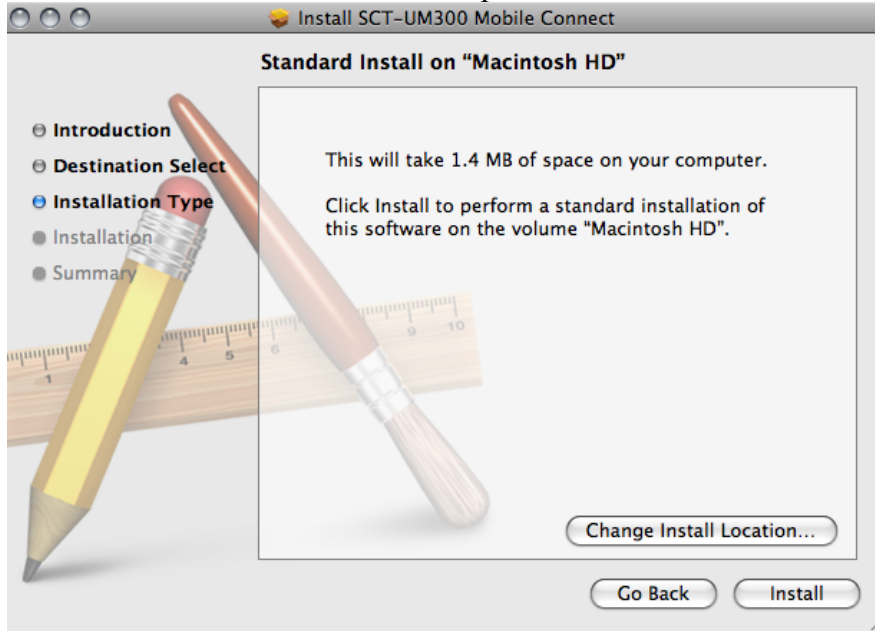
- The SCT-UM300 Mobile Connect Installer will open and will consist of five steps: Introduction, Destination Select, Installation Type, Installation, and Summary. Select “Continue”



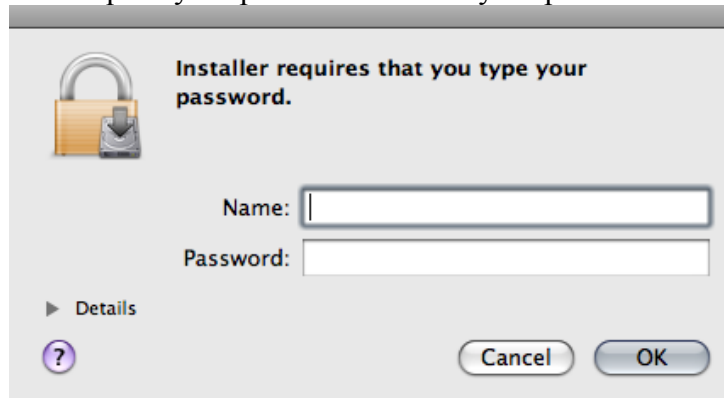
- Select the destination of the software. Press “Continue” to proceed.



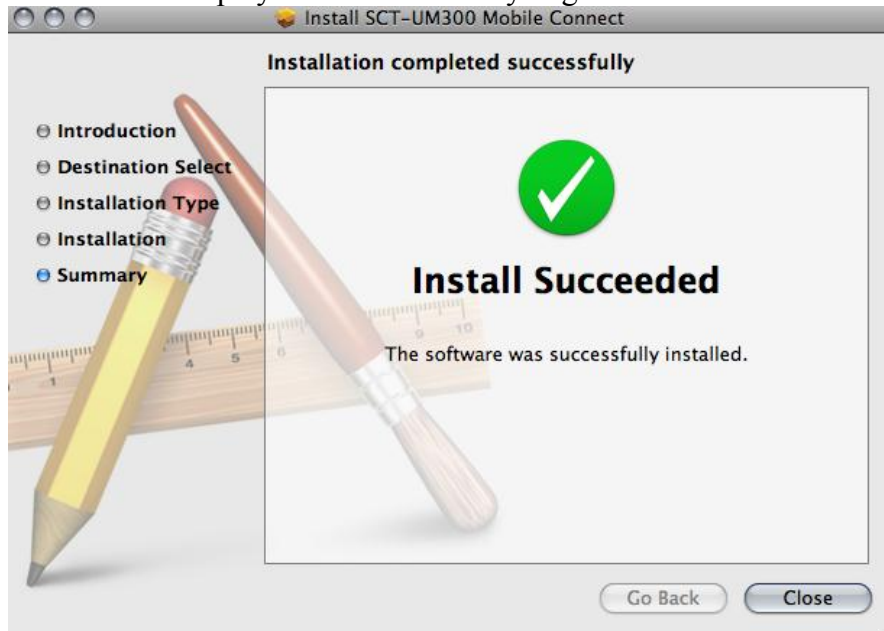
8. The Installation type will be displayed. There is the option to change the Installation location on this screen. Select “Install” to proceed.



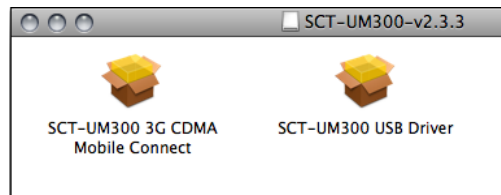
9. The Installer will request your password. Enter your password and press “OK”.



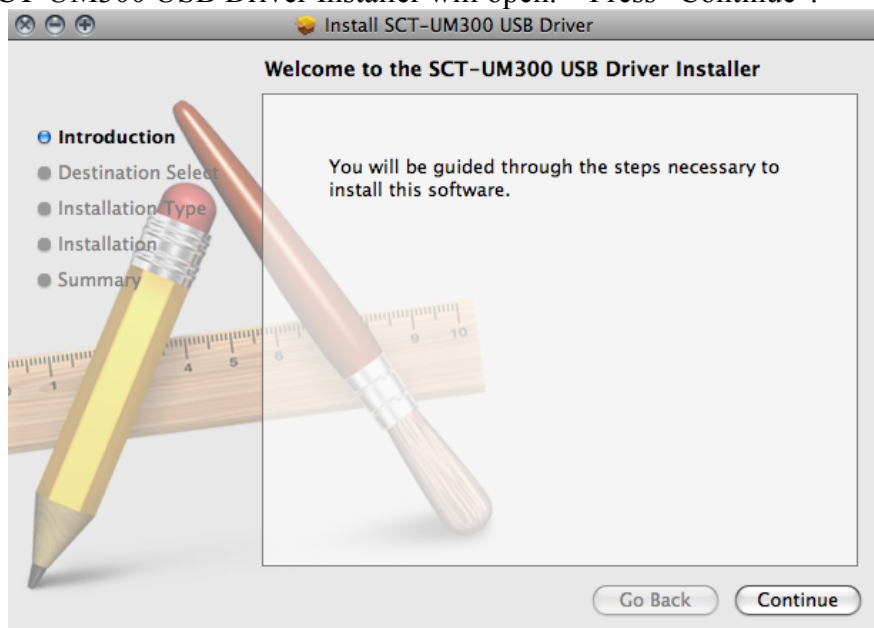
10. The installation process will begin. When the installation is complete, “Install Succeeded” will be displayed on the Summary Page. Press “Close”.



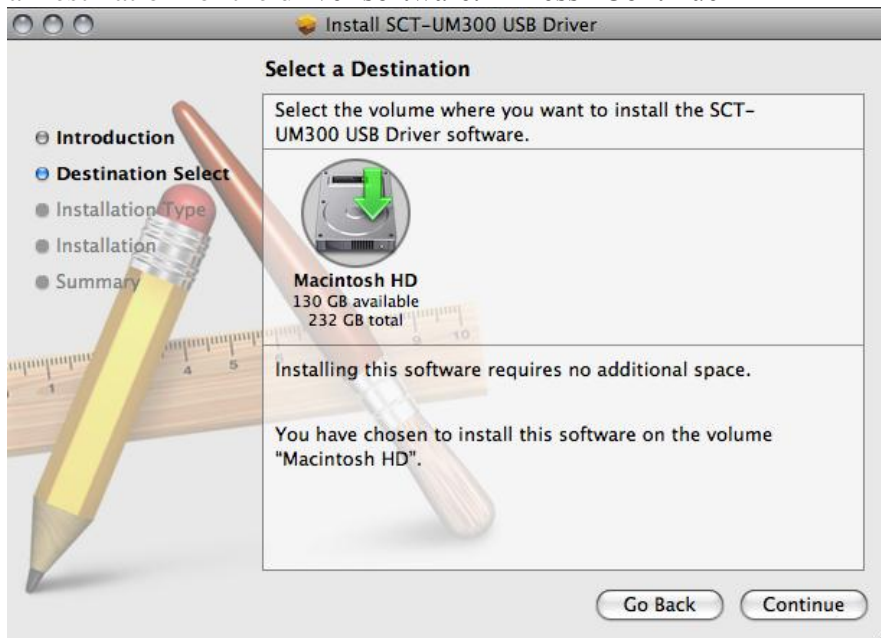
11. The SCT-UM300-v2.0.5 folder will still be open. Select the “SCT-UM300 USB Driver” package.



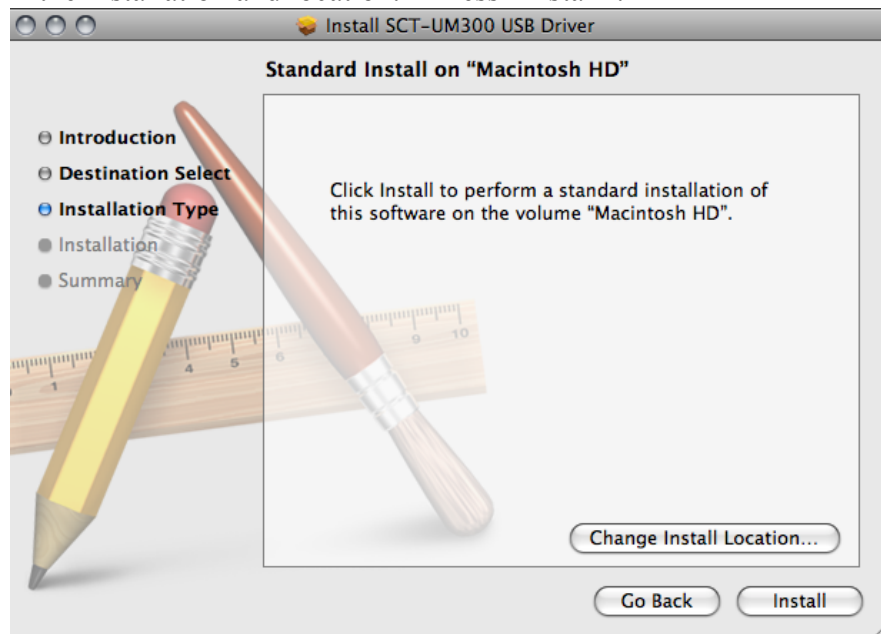
12. The SCT-UM300 USB Driver Installer will open. Press “Continue”.



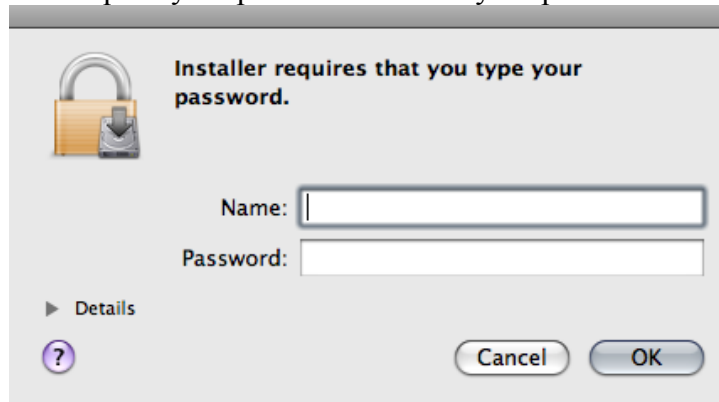
13. Select a Destination for the driver software. Press “Continue”



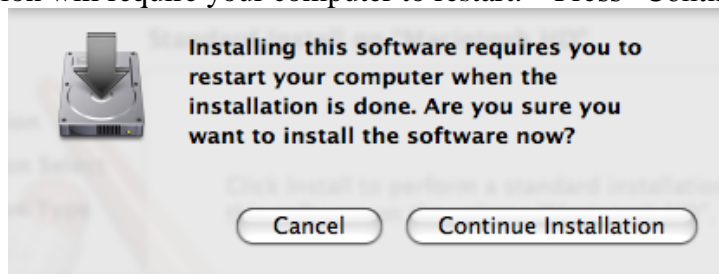
14. Confirm the installation and location. Press “Install”.



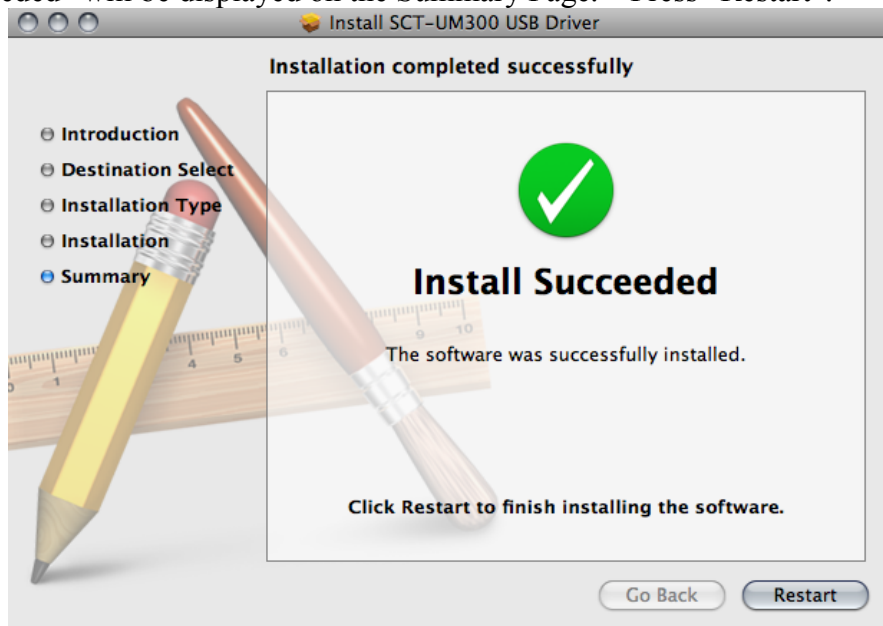
15. The Installer will request your password. Enter your password and press “OK”.



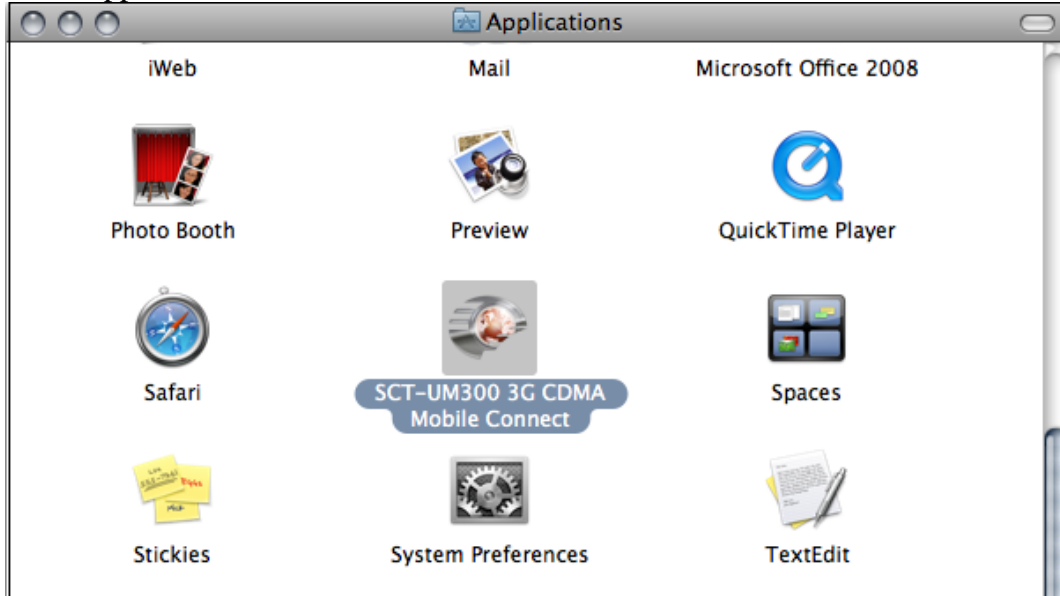
16. The installation will require your computer to restart. Press “Continue Installation”.



17. The installation process will begin. When the installation is complete, “Install Succeeded” will be displayed on the Summary Page. Press “Restart”.



18. After the restart, close any open windows. The Mobile Connect software will be located in the applications list.



Mac Home Screen

The system supports Mac 10.4.1 and later versions.

The home screen is the first screen displayed when you enter the system, and is shown below:



Data Link

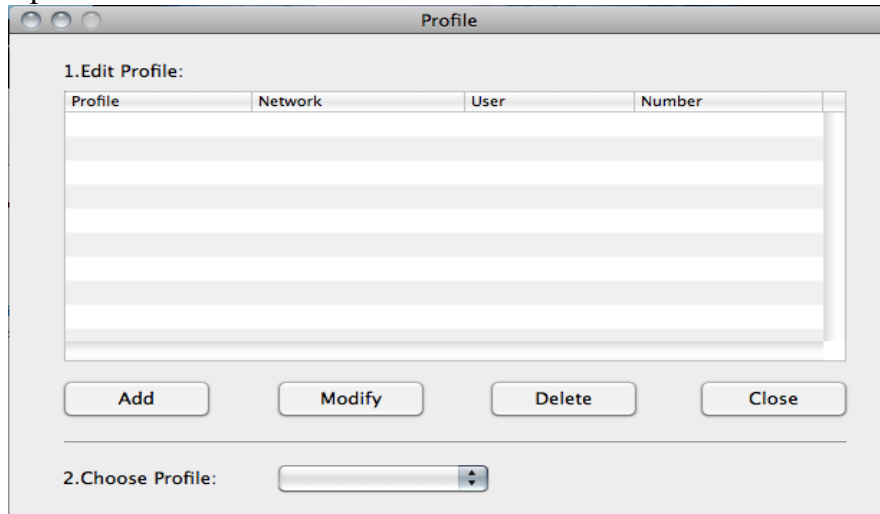
A dialup data link over can be established via the MAC Mobile Connect. It requires network coverage of CDMA 1X or EVDO. For each link, the MAC Mobile Connect is connected to a specific phone number.

The MAC Mobile Connect supports download to 3.1Mbps and upload to 1.8Mbps.

Establishing a data link

1. Click  to Add, Modify or Delete a profile.

2. Select a profile from "Choose Profile" - see screen below:




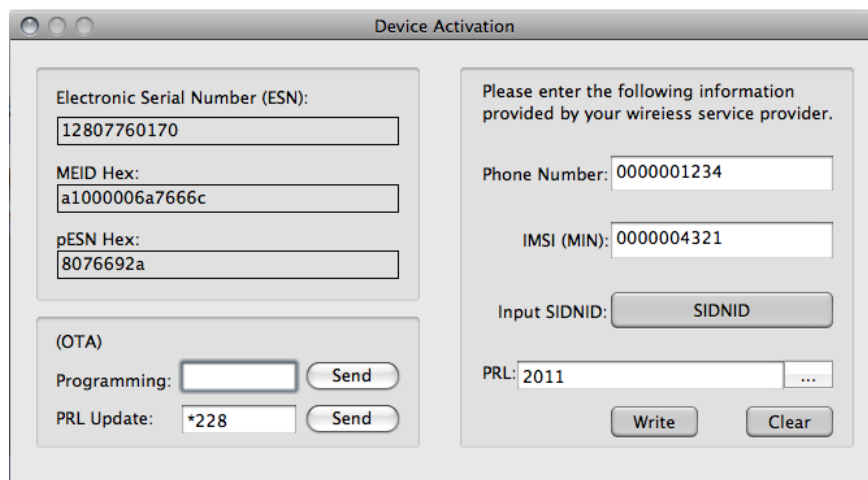
3. Click "Connect" to establish a data link.

Disconnect a data link

To disconnect, click "Disconnect".

Device Activation


In the main window, Click  button, the "Device Activation" page contains device parameters, OTA, and device activation.



OTA

In the main window, Click the “Activation” button, the "Device Activation" page contains the OTA request and Device Activation functions.

View OTA


1. Make sure the device is connected
2. In the main window, Click .
3. Select Programming to have your device programmed via OTA.
4. Select PRL Update to update the PRL in your device via OTA.
5. Click the "Send" button on the OTA option you require.

Display

The display of parameters as flows:

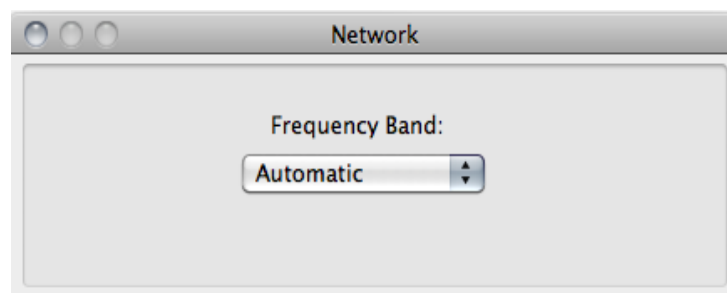
1. Electronic Serial Number (ESN): contains the ESN (Electronic Serial Number) of the device in decimal format
2. MEID Hex: contains the MEID (Mobile Equipment Identity) of the device in hex format
3. pESN Hex: contains the ESN (Electronic Serial Number) of the device in hex format

Device Activation

1. In the main window, select the  button.
2. Input some parameters or all parameters with MDN (Phone Number), MIN (IMSI), SID, NID, and select a PRL file.
3. Click on “Write” to activate the device.


Network

Depending on the region, you may be covered by several networks at a same time. By default, the device will choose an available network based on your account. You may also choose the network from the list in Mobile Connect while your settings are up to your account.



Frequency Band

By default, the phone will pick a Frequency Band automatically, unless the carrier has a special instruction.

1. In the main window, select the  button
2. Select one of the settings in the Frequency Band dropdown list.

Details of each frequency band

Option	Note
Hybrid	Allows the phone to select the either EVDO or CDMA service based on the networks available in your current location.
CDMA 1x Only	Restricts the device to CDMA service.
EVDO Only	Restricts the device to EVDO service.

Select the Network

1. In the main window, select "Settings-->Network"
2. Select "Hybrid", "EVDO Only" or "CDMA1x Only".

Safety Information

Read the safety information carefully to ensure the correct and safe use of your wireless device.

Interference

Do not use your wireless device if using the device is prohibited or when it causes a danger or interference with electronic devices.

Medical Device

- Observe the rules and regulations set forth by the hospitals and health care facilities.
- Some wireless devices may affect the performance of hearing aids. For any such problems, consult your service provider.
- If you are using an electronic medical device, consult the doctor or device manufacturer to confirm whether the radio wave affects the operation of this device.

Area with Inflammables and Explosives

To prevent explosions and fires in areas that are stored with inflammable and explosive devices, do not use your wireless device and observe the rules.

Traffic Security

- Observe local laws and regulations when using the wireless device.
- Observe the rules and regulations of airline companies. When boarding, power down your wireless device.

Safety of Children

Do not allow children to use the wireless device without guidance. Small components of the wireless device may cause a choking hazard.

Care and Maintenance

It is normal that your wireless device gets warm during use. Before you clean the wireless device, remove it from your computer.

- Use the wireless device in a clean environment. Avoid extreme temperatures when storing the device.
- Do not get the wireless device wet.
- Do not drop or throw the wireless device.
- Clean your wireless device with a damp cloth or antistatic cloth. Do not use alcohol, chemicals, or powders to clean it.
- Do not disassemble the device.

Specific Absorption Rate (SAR)

Your wireless device is a radio transmitter and receiver. It is designed not to exceed the limits for exposure to radio waves recommended by international guidelines. These guidelines were developed by the independent scientific organization ICNIRP and include safety margins designed to assure the protection of all persons, regardless of age and health.

The guidelines use a unit of measurement known as the Specific Absorption Rate, or SAR. The SAR limit for wireless devices is 2.0 W/kg and the highest SAR value for this device when tested complied with this limit.

Body Worn Operation

Important safety information regarding radiofrequency radiation (RF)

To ensure compliance with RF exposure guidelines the device must be used with a minimum of 1.5cm separation from the body.

Failure to observe these instructions could result in your RF exposure exceeding the relevant guideline limits.

Regulatory Information

The following approvals and notices apply in specific regions as noted.

CE Approval (European Union)

The wireless device is approved to be used in the member states of the EU. The wireless device is in compliance with the essential requirements and other relevant provisions of the Radio and Telecommunications Terminal Equipment Directive 1999/5/EC (R&TTE Directive).

Federal Communications Commission Notice (United States): Before a wireless device model is available for sale to the public, it must be tested and certified to the FCC that it does not exceed the limit established by the government-adopted requirement for safe exposure.

The SAR limit adopted by the USA and Canada is 1.6 watts/kilogram (W/kg) averaged over one gram of tissue. The highest SAR value reported to the FCC for this device type was compliant with the limit.

FCC Statement

This device complies with Part 15 of the FCC Rules. Operation is subject to the following two conditions: (1) this device may not cause harmful interference, and (2) this device must accept any interference received, including interference that may cause undesired operation.